



TC 130 Telescopic Cranes

Model Description

All BIGMAX TC series cranes, including the popular TC-130, have the same mounting bolt pattern, size and location making it easy for body builders to plan for the installation of a compact BIGMAX crane. The square bolt pattern of BIGMAX TC series cranes is also appreciated by body builders. This feature makes it possible to locate the crane base in any one of 4 positions

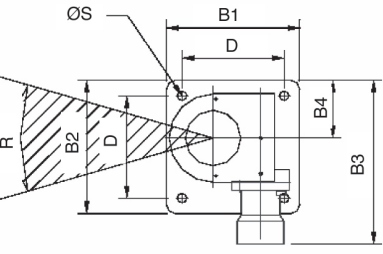
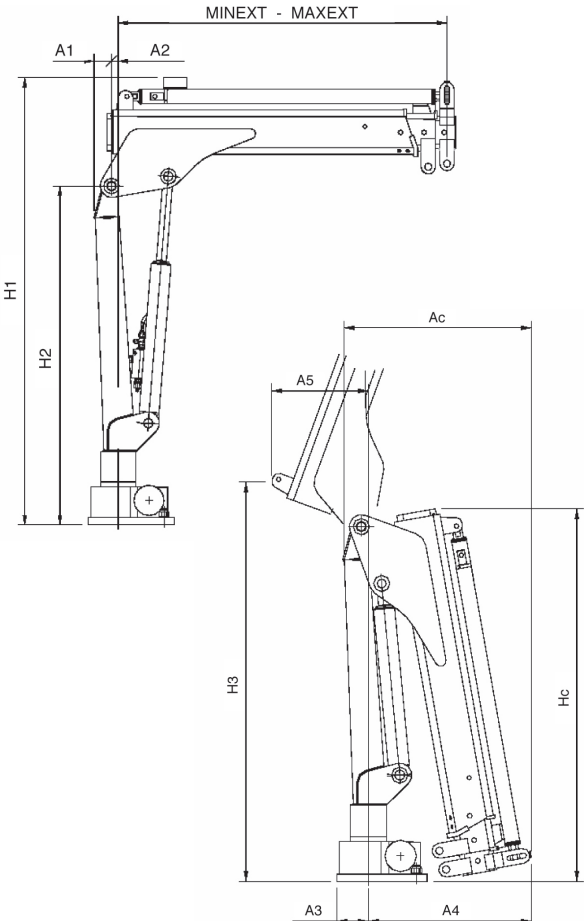
during installation. It also makes it easy to change the base position later for operator convenience or to easily relocate the slewing stop location. The controller is designed to be mounted in a convenient location near the crane base to suit the application.

Technical Data

		TC130
Max dynamic moment		1570
- daNm		11580
- ft lb		
Std crane weight (crane + installation kit + oil tank or power pack. Weight does not include stabilizers.)	.1	175
		385
	.2	200
		440
	.3	-
	.4	-
Max capacity	.1	1175
		2585
	.2	1100
		2420
	.3	-
	.4	-
Max oil flow to control valve		6.0
		1.6
Max working pressure		150
		2180
Max slewing moment		350
		2580
Slewing angle		350°
Oil tank capacity		17.5
		4.6
Power needed by the pump		2.0
		2.7
Design standards		DIN 15018/EN 12999

Dimensions

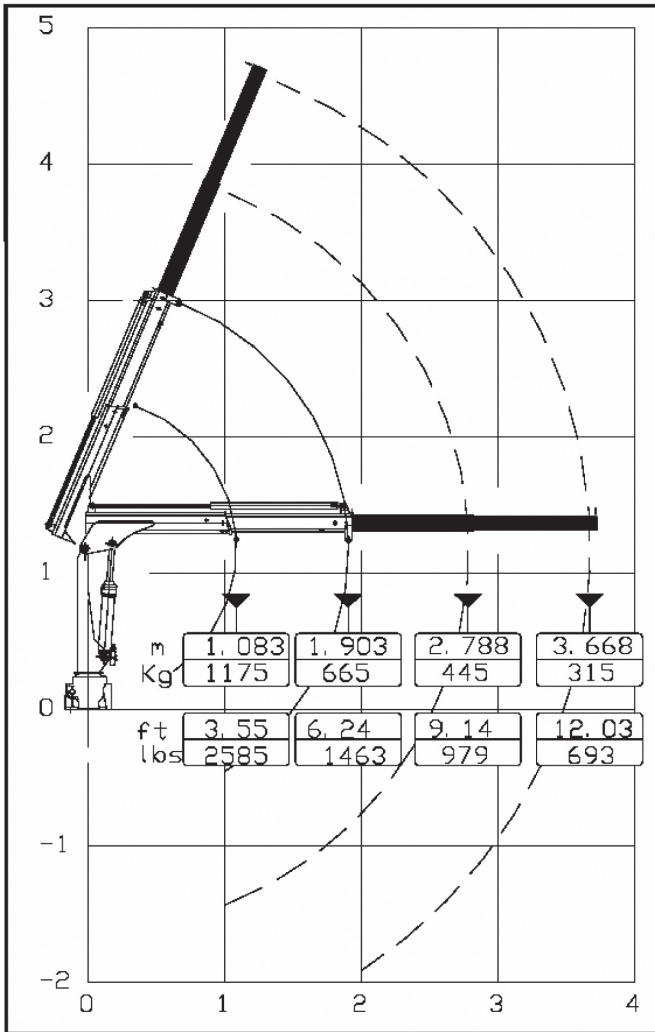
mm inches	TC 130		
	version	.1	.2
MINEXT		1083	1148
		3' 7"	3' 9"
MAXEXT		1903	2788
		6' 3"	9' 2"
A1		58	58
		2.3"	2.3"
A2		24	24
		0.94"	0.94"
A3		170	170
		6.7"	6.7"
A4		491	542
		19.3"	21.4"
A5		267	267
		10.5"	10.5"
Ac		573	624
		22.5"	24.6"
B1		310	310
		12.2"	12.2"
B2		300	300
		11.8"	11.8"
B3		450	450
		17.7"	17.7"
B4		150	150
		5.9"	5.9"
D		230	230
		9.1"	9.1"
H1		1518	1518
		59.8"	59.8"
H2		1182	1182
		46.5"	46.5"
H3		1289	1289
		50.7"	50.7"
Hc		1241	1241
		48.8"	48.8"
R		25°	25°
ØS		21	21
		0.83"	0.83"



TC 130 Telescopic Cranes | p2

Load Diagrams

TC 130.1



TC 130.2

